

PN SPECIALITY DUAL CURE LAMP CORDLESS



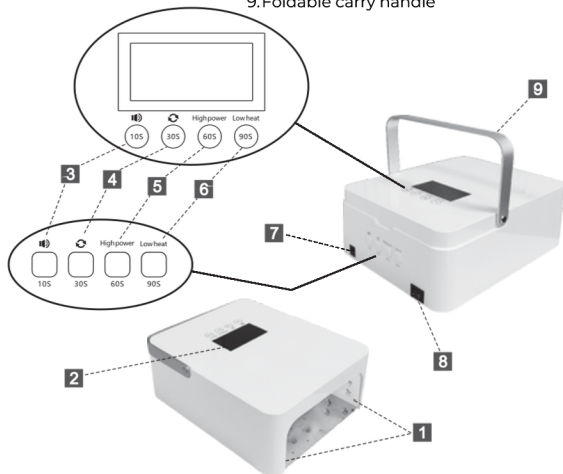
User Manual

www.planetnails.com.au



1 What's in the box? 2 Parts list

- Lamp main unit
 - AU AC Adapter
 - User Manual
1. Infrared Sensor
 2. Digital Display
 3. 10s timer / Beep switch
 4. 30s timer / Display direction switch
 5. 60s timer / High Power switch
 6. 90s low heat timer / Low power switch
 7. Power socket
 8. On/Off Switch
 9. Foldable carry handle



3 Product instruction

FOR PROFESSIONAL USE

4 Operation instruction

1. Please fully charge the unit before first use. Connect the power adapter. Please only use the original 12.6V 1.9A adapter supplied, if a different adapter is used the battery will be damaged.
2. Once fully charged, the power adapter can be unplugged from the unit. Switch the unit on at the ON/OFF Switch. The default setting is 60s, in standby the user can select times by pressing 10s/30s/60s/90s (low heat mode). Ensure the unit is switched off when not in use – this will ensure longevity of the battery.
3. All timer buttons acts as an on/off switch independent of the infrared sensor, once activated (by either touch top buttons or push back buttons) the light will switch on and start the selected countdown. To switch the light off, simply push the same button again. Once a time is selected the infra red sensor will work on that time setting. The infrared sensor will be activated when a hand is placed inside the lamp, switching the Light on and automatically switches off if the hand is removed or the selected time has lapsed.
4. 90s low heat mode: During low heat mode the power increases gradually over time to help prevent a heat spike during curing. UV intensity starts off at 50% and gradually increases to 100% at around the 31second mark- ensuring a proper cure when the full 90seconds has passed.
5. High Power Mode: This lamp has the option to increase the UV intensity to 125% during HPM. This mode is only recommended to be used for curing Highly Pigmented Gel Polish or Art Gels like one coat black, white or nudes. It is NOT recommended to use HPM with builder gels! To engage HPM push and hold the 60s

button for 1.5seconds - a "H" will appear on the display in front of the timer and all the time settings will be on HPM. To disengage simply push and hold the 60s button for 1.5s - the 'H' will disappear- the UV intensity will default back to 100%.

6. Low Power Mode: This lamp has the option to decrease the UV intensity down to 75% during LPM. This mode is only recommended to be used for FLASH curing builder gels to reduce the likelihood of a heat spike. If LPM is used IT NEEDS TO BE FOLLOWED BY A STANDARD FULL CURE (100% UV intensity) at the recommended cure time to ensure a proper cure. To engage LPM push and hold the 90s button for 1.5seconds - a "L" will appear on the display in front of the timer and all the time settings will be on LPM. To disengage simply push and hold the 90s button for 1.5s - the 'L' will disappear - the UV intensity will default back to 100%.
7. Display direction change: To change the direction of the display push and hold the 30s button for 1.5seconds, and the display will flip, to change back just hold the 30s button for 1.5s.
8. Beep and Silent switching function: To silence the beeping sound, push and hold the 10s button for 1.5seconds, and the lamp will be silent, to change back just hold the 10s button for 1.5s and the beeping will engage again.
9. Battery Capacity Display: When the battery reaches 15% the battery capacity symbol will start to flash. To continue using the Lamp you will need to charge the unit. The lamp can be used whilst it is on charge but it is recommended to limit use whilst on charge as it can affect the lifespan of your battery. Once your adapter is connected, the battery capacity symbol will flash, indicating charging, once full charge is reached the symbol will stop flashing. Full charge takes 4 hours, and delivers a 6-8 hour run time (dependant on intensity options used).

5 Specifications

- LED Bulbs: 365nm + 405nm UV LED 42pcs
- Rated Power: Max 36W - LED Power Irradiance Equiv. 60W CCFL
- AC input: 100V-240V 50/60Hz Output: DC 12.6V 1.9A
- Battery Capacity: 11.1V 5200mAh 57.72WH
- Size: 246x200x90mm

6 Cautions

- Please read instructions carefully before using the unit. Please use only as directed.
- Please don't allow any liquids to enter the unit or submerge the unit in water. Only use solvent free cleaners (The One) to clean the Lamp. Other cleaners may damage or remove the touch buttons, rendering the buttons unusable. Don't clean the LEDs whilst still hot or on.
- Please don't touch the LEDs while on or hot.
- Please don't use the lamp if it's displaying any faults.
- Avoid looking directly at the emitted light where possible.
- If you find that the Light isn't switching on when a hand is placed in the Lamp, please check whether the Lamp is switched on. If the Lamp is switched on, it may be that the battery capacity has been exhausted. Please charge the unit.
- If the unit will be unused for a long time, please do not leave it plugged in. Please charge the battery at least every 3 months to prevent excessive battery depletion which would shorten the lifespan of the battery.
- Stop using the unit if you suspect any faults or damage with the battery. If the unit does not hold a charge do not continue to charge or use it to avoid the risk of battery explosion.
- Keep out of reach of children.

For Professional Use ONLY
Distributed by Planet Nails Australia
www.planetnails.com.au

